

TAMS Master Trust Program

ABOUT US

Charles L. Crane Agency is able to provide solutions to insurance needs that are presented to the trust company. Through innovation & technology, we strive to exceed customer expectations with service that is responsive and reliable. Our size gives us strength & stability and provides you with peace of mind. We are the oldest independent insurance agency west of the Mississippi and currently ranked as one of the largest privately held insurance agencies in the country.

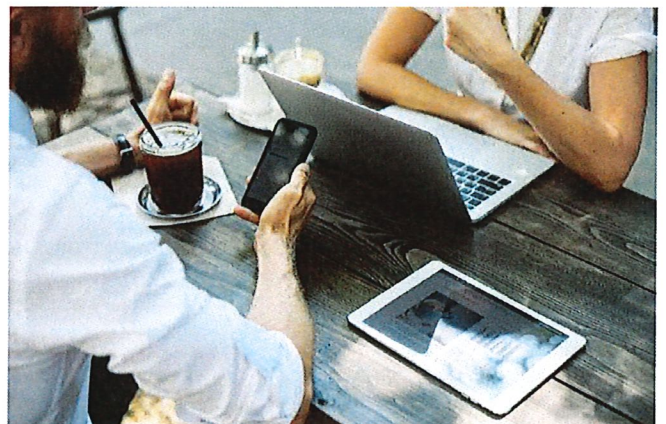
SYSTEM FEATURES

- Paperless application process
- Immediate invoices
- Ability to track external policies
- Interface capability with bank management software
- Transition performed in real time
- System can be customized to bank needs



MASTER TRUST POLICY FEATURES

- All assets can be covered under a single policy
- Ability to include Wind, Earthquake, and Flood



COMPANY STRENGTH

Crane has over 270 employees who are driven to be the best in our industry. We conduct business in all 50 states and have strong relationships with the insurance companies we represent, some of which lasting more than 100 years. When you place your trust in us, one thing is certain... Crane is your advocate in an uncertain world.



SOLUTIONS

We are directly involved in the placement of your portfolio coverage and the servicing needs of your account while taking full advantage of all Crane has to offer for financial institutions, private trust companies, and wealth management firms in the fiduciary area.



FACTS ABOUT CRANE

- Founded in 1885
- Able to write in all 50 states
- 30 + years in the Trust Business
- Contacts with all major independent Agency Insurance Companies

TRAINING

The Charles L. Crane Agency welcomes the opportunity to demonstrate the system.

CONTACT US

David Boschert
(314)444-4903
DavidB@craneagency.com

Kim LaChance
(314)444-4904
LaChanceK@craneagency.com

Megan Hogan
(314)206-4123
MHogan@craneagency.com

Visit our website at: <https://trustdata.com>